

FLORIDA REPERTORY THEATRE

2017-2018 SEASON

ARTSTAGE STUDIO THEATRE • FORT MYERS RIVER DISTRICT
ROBERT CACIOPPO, PRODUCING ARTISTIC DIRECTOR

PRESENTS

Outside MULLINGAR

By John
Patrick Shanley

SPONSORED BY NU IMAGE CLEANERS • THE NEWS-PRESS

STARRING

ensemble members

VIKI BOYLE* • RACHEL BURTRAM* • BRENDAN POWERS*

and

MARTIN LAPLATNEY*

DIRECTED BY *ensemble member* CHRIS CLAVELLI**

SET DESIGNER
ensemble member
RICHARD CROWELL

COSTUME DESIGNER
CHARLENE GROSS***

LIGHTING DESIGNER
ROB SILER

SOUND DESIGNER
JOHN KISELICA

PRODUCTION STAGE MANAGER
ensemble member
JANINE WOCHNA*

Outside Mullingar is presented by special arrangement with Dramatists Play Service, Inc., New York.

Originally commissioned by Manhattan Theatre Club (Lynne Meadow, Artistic Director; Barry Grove, Executive Producer) with funds provided by U.S. Trust, and received its world premiere there on January 3, 2014.

2017-18 GRAND SEASON SPONSORS



The Fred & Jean Allegretti Foundation • Naomi Bloom & Ron Wallace • Dinah Bloomhall • Jane & Bob Breisch • Alexandra Bremner • Janet & Bruce Bunch • Chippendale Audiology • Berne Davis • Mary & Hugh Denison • Ellie Fox • David Fritz/Cruise Everything • Nancy & Jim Garfield • Vici & Russ Hamm • John Madden • Joel Magyar • Noreen Raney • Linda Sebastian & Guy Almeling • Arthur M. Zupko

This entire season sponsored in part by the State of Florida, Department of State, Division of Cultural Affairs, and the Florida Council on Arts and Culture. Florida Repertory Theatre is a fully professional non-profit LOA/LORT Theatre company on contract with the Actors' Equity Association that proudly employs members of the national theatrical labor unions. *Member of Actors' Equity Association. **Member of the Stage Directors and Choreographers Society. ***Member of United Scenic Artists.

CAST

(in order of appearance)

Anthony Reilly.....	BRENDAN POWERS*
Tony Reilly.....	MARTIN LAPLATNEY*
Aoife Muldoon.....	VIKI BOYLE*
Rosemary Muldoon.....	RACHEL BURTRAM*

TIME & PLACE

A cattle and sheep farm outside Killucan, in Ireland. December, 2008.

THERE WILL BE NO INTERMISSION.

The video and/or audio recording of this performance by any means whatsoever is strictly prohibited.

Asst. Stage Manager: **Miranda Paine**
 Wardrobe Supervisor: **Olivia Pedigo**
 Lighting/Sound Board Operator: **Katie Lowe**
 Understudy for Anthony Reilly: **Jason Parrish***

ABOUT THE PLAYWRIGHT

JOHN PATRICK SHANLEY is from the Bronx. He was thrown out of St. Helena's kindergarten. He was banned from St. Anthony's hot lunch program for life. He was expelled from Cardinal Spellman High School. He was placed on academic probation by New York University and instructed to appear before a tribunal if he wished to return. When asked why he had been treated in this way by all these institutions, he burst into tears and said he had no idea. Then he went into the United States Marine Corps. He did fine. He's still doing okay.

A SPECIAL NOTE OF THANKS


Florida Rep would like to thank so many people whose hard work and dedication helped us to make it through Hurricane Irma relatively unscathed. Our operations were interrupted and many of our staff and guest artists evacuated Southwest Florida to ride out the storm. Luckily, our facilities were relatively unharmed and we were able to open on time despite the loss of rehearsal and production time. A special note of thanks goes to the following leaders on our staff for their efforts to keep our people and facilities safe: Tim Billman, John Martin, Drew Ogle, Renee Pesci, Kody C. Jones, and Aaron Martin. Florida Rep is also indebted to the Hippodrome in Gainesville for taking in the cast, director, and stage manager of *Outside Mullingar*, and to Triad Stage in Greensboro, NC for giving our production team a place out of harm's way to work on the scenic elements you see before you. In addition, our whole staff deserves a special thanks for their efforts after the storm to open our 20th Season on schedule. And finally, thank YOU, our patrons, for coming to the theatre and enjoying live theatre in Southwest Florida.

ADDITIONAL THANKS: Amy, Michael, Caleb, & Jesse Massari • Josh & Molly Schacht
 Dave and Katie Southard • Amanda Warriner

†Member of Florida Repertory Theatre's *Ensemble of Theatre Artists*. See page 23 for the entire ensemble.

 The Designers at this Theatre
 are Represented by

 United Scenic Artists • Local USA 829
 of the International Alliance of Theatrical Stage Employees

*

 The Actors & Stage Manager
 employed in this production
 are members of Actors' Equity
 Association, the Union of
 Professional Actors and Stage
 Managers in the United States.

**

 The Director is a member of the
 STAGE DIRECTORS AND CHOREOGRAPHERS
 SOCIETY, a national theatrical labor union.

Outside
MULLINGAR

CREATIVE TEAM



VIKI BOYLE* (Aoife Muldoon) is a 35-year veteran of New York and regional theatre, film, and TV. She is an ensemble member here at Florida Rep and last appeared in *Over the River and*

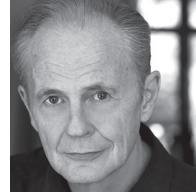
Through the Woods, *A Christmas Story*, *Vanya and Sonia and Masha and Spike*, *Arsenic and Old Lace*, *Noises Off*, and Neil Simons' *Rumors*. Off-Broadway credits at the Roundabout, MCC, and American Globe theatres include her own work *The Whole Truth*, winner of the Samuel French Short Play Series, and *Term Limit* for which she won the top prizes for both acting and writing. She received two Carbonell Awards for *The Little Foxes* and *Don't Dress for Dinner* at the former Caldwell Theatre in Boca Raton. Her movie and TV credits include *The Wolf of Wall Street*, *The Leftovers*, *Person of Interest*, and over 200 commercials, where her work has been recognized with the CLIO award. Besides contributing to the wonderful musical tribute *A Dash of Rosemary*, she and writing partner Doug Kampen publish NYC Trivia Tours, a series of self-guided walking tours of New York City. She is overjoyed to be back at Florida Rep.



RACHEL BURTRAM* (Rosemary Muldoon) has been a company member since 2002, and has performed in over 25 plays with Florida Rep. Additionally, she has played the roles of

Company Manager, Front of House Manager, Director of Audience Development, and Associate Director here at Florida Rep. Favorite roles at Florida Rep include: *Doublewide*, *Best of Enemies*, *Split in Three*, *Clybourne Park*, *Miracle on South Division Street*, *August: Osage County*, *Trying*, *Doubt*, *Amy's View* (with Carol Lawrence). Other Regional Theatre credits: Geva Theatre Center, Actors Theatre of Louisville and the Humana New Play Festival, Riverside Theatre, The Kitchen Theatre, Hippodrome Theatre, City Equity Theatre, Barnstormers Theatre, Gloucester Stage. NYC credits include: Actors Studio, Vital Theatre

Company, NYC International Fringe Festival. TV & Film: *Bloodline*, *Emma's Fine*, *Burn Notice*, *World Traveler*. National commercials. Rachel is a proud member of Actors' Equity. She is married to actor Brendan Powers. www.rachelburttram.com



MARTIN LAPLATNEY* (Tony Reilly) is very happy to be returning to Florida Rep having done *One Slight Hitch* here with Chris directing. Broadway: *Amadeus*, *The Crucifer of Blood*,

Hedda Gabbler, *Major Barbara*, *The Road To Mecca*. Off-Broadway: *Tartuffe*, *The Passion of Dracula*, *The Waverly Gallery*, *Give Me Your Answer Do* (Roundabout Theater), *The Paris Letter*, *Pretty Hunger* (The Public Theater). Regional: Leading roles ranging from Jack Tanner in *Man and Superman* to *Macbeth* at: The Repertory Theatre of St. Louis, Hartford Stage Company, Indiana Repertory Theater, The Ahmanson Theatre, Olney Theater Center, GeVa Theater, Delaware Theatre Company, Baltimore Center Stage, The Empty Space, ACT, (Seattle), Pennsylvania Center Stage, Florida Studio Theater, and many others. TV: *Law and Order*, *Cosby* *Mysteries*, *Alien Nation*, *Royal Pains*, *The Good Wife*, *Boardwalk Empire*, *Elementary* and a bunch of commercials.



BRENDAN POWERS* (Anthony Reilly) Select Florida Rep credits over the past eight seasons include *The 25th Annual Putnam County Spelling Bee*, *The Mousetrap*, *The Cocktail*

Hour, *A Christmas Story*, *The Unexpected Guest*, *Dividing the Estate*, *Around the World in 80 Days*, *The Fantasticks*, *Doubt*, *Opus*, *Boeing-Boeing*, and *The Glass Menagerie*. He is married to fellow Florida Rep ensemble member Rachel Burttram and also serves as a Development Associate. Other credits include the Tony Award-winning play, *Art* and *The Big Knife*, both with Alec Baldwin, the Noel Coward revue, *Oh, Coward!* at Off-Broadway's Irish Repertory Theatre, *God of*

2017-2018 Season

A *Revival* of a Florida Rep Favorite, Gut-Busting Comedies, A **Pulitzer Prize-Winning Drama, a Brand-New Musical Revue, a World Premiere, and More!**

*All Titles and Dates Subject to Change

OUTSIDE MULLINGAR

by John Patrick Shanley • **THRU OCT 22, 2017**

The Season Starts Two Weeks Earlier!

A Delightful and Heart-Warming Romantic Tony-Winning Comedy! From the Pulitzer Prize and Oscar-winning author of *Doubt* and *Moonstruck*! "Mr. Shanley's finest work since *Doubt*!" —*New York Times*

• In the ArtStage Studio Theatre •

SYLVIA

by A.R. Gurney • **OCT 24-NOV 15, 2017**

BACK BY POPULAR DEMAND! Celebrate Florida Rep's 20th Anniversary with a revival of our Biggest Hit! A howlingly funny comedy from the author of *The Cocktail Hour* and *Black Tie*!

• In the Historic Arcade Theatre •

DISGRACED

by Ayad Akhtar • **NOV 7-DEC 10, 2017**

A Gripping and Electrifying Pulitzer Prize Winning Drama! Don't Miss the most performed drama in America! Engaging and provocative, this story explores religion, race, relationships, and betrayal.

• In the ArtStage Studio Theatre •

THE LAST NIGHT OF BALLYHOO

by Alfred Uhry • **NOV 28-DEC 17, 2017**

A Tony-Winning BEST PLAY from the Pulitzer Prize-winning author of *Driving Miss Daisy*!

"An aching beautiful play! Luminous and powerful!" —*Los Angeles Times*

• In the Historic Arcade Theatre •

NIGHT AND DAY: Love Lost & Found Through the Eyes of Cole Porter

Conceived & Directed by Robert Cacioppo • Music and Lyrics of Cole Porter

DEC 19, 2017-FEB 25, 2018

A WORLD PREMIERE! *Anything Goes* in this glamorous and thrilling journey into the music of one of America's most beloved songwriters! From the creative team that brought you *Fascinatin' Gershwin* and *Too Marvelous for Words*!

• In the ArtStage Studio Theatre •

SUBSCRIBE NOW!

PACKAGES ARE AVAILABLE FOR 9, 8, 7, 6, or 5 SHOWS!

2017-2018 Season

SUBSCRIBE NOW to Our 20th ANNIVERSARY SEASON

Please Note: Tuesday, Wednesday, & Thursday now with 7pm curtains

HOW THE OTHER HALF LOVES

by Alan Ayckbourn • JAN 9-31, 2018

One secret affair, two disastrous dinner parties, and three couples heading for matrimonial mayhem! Marital discord has never been funnier in this farce from the Tony and Olivier Award-winning author of previous Florida Rep Hits, *Bedroom Farce* and *Relatively Speaking!*

• In the Historic Arcade Theatre •

THE MIRACLE WORKER

by William Gibson • FEB 13-MAR 7, 2018

A timeless American classic and Tony Award-winning BEST PLAY! Witness the captivating true story of how Annie Sullivan rescued a young Helen Keller from her dark and tortured silence.

• In the Historic Arcade Theatre •

CABARET

Book by Joe Masteroff • Music by John Kander • Lyrics by Fred Ebb

MAR 20-APR 11, 2018

We celebrate our 20th Anniversary with a hit musical from Broadway's Golden Age! Come hear some of the most memorable songs in theatre history, including "Cabaret," "Willkommen" and "Maybe This Time." Leave your troubles outside — life is beautiful inside the Kit Kat Club!

• In the Historic Arcade Theatre •

WORLD PREMIERE!

GEORGE WASHINGTON'S TEETH

by Mark St. Germain

APR 24-MAY 13, 2018

NOW SET TO PLAY IN THE HISTORIC ARCADE THEATRE!

A hilarious comedy that follows the exploits of the women of the beleaguered New Bunion Historical Society as they battle the male city council to keep the doors open. From the Author of Florida Rep Favorites: *Best of Enemies* and *Camping with Henry and Tom!*

FLORIDA REP IS
"One of America's TOP Repertory Companies!"
—The Wall Street Journal

CREATIVE TEAM

Carnage, August: Osage County, Our Town, Arsenic and Old Lace, and numerous others. TV work includes FBI Agent Rick Cranston on *Graceland* (USA Network), and David Weller in the Netflix original series, *Bloodline*, starring Sissy Spacek. He can also be seen driving the big blue Cadillac in a series of national commercials for Alabama Road Trips. His cartoon captions have been winners for various contests including *The New Yorker, Hartford Courant, Denver Post, Moment Magazine, Clinical Psychology, Inside Higher Ed,* and the *Greensboro News-Record*.

CHRIS CLAVELLI† (Director)** is the Associate Artistic Director here at Florida Repertory Theatre where he has directed and performed in more than 40 productions. He was honored with an Alan Schneider Directing Award nomination through Theatre Communications Group. He was a founding member and co-artistic director of the Neighborhood Theatre for Kids in Brooklyn. Directing credits: Florida Rep: *The Cocktail Hour, One Slight Hitch, Tribes, The Santaland Diaries, Collected Stories, Educating Rita, Lend Me a Tenor, Time Stands Still, The Mystery of Irma Vep, Black Tie, Sideman, Trying, Rounding Third, Alone Together, The Foreigner, The Glass Menagerie, and The Lady with All the Answers.* Other directing credits: The Riverside Theatre, The Virginia Stage Company: Off Square Theatre: The New York Fringe Festival, The Chenango River Theatre, Southwest Florida Symphony, Symphony Space, York Theatre, 78th Street Theatre, Greenbrier Valley Theatre, Neighborhood Theatre for Kids, the famed Actors Studio, and 16 productions for the Depot Theatre. As an actor he has worked here at Florida Rep in 15 productions and all over the country. In 2012 he was named *Florida Weekly's* Best Actor of the Year and has been the recipient of both the Barrymore Award (Philadelphia) and the South Florida Carbonell for best actor. His one-man play, *A Little More Than You Wanted to Spend*, ran at The Drilling Company in New York City. He currently serves in the Classical Acting Division of the Actors Studio Drama School at Pace University.

RICHARD CROWELL† (Set Designer) has been designing scenery and lighting for the stage in various parts of the country for over 35 years. He is delighted to be considered a long-time

member of Florida Rep's "Ensemble of Theatre Artists," designing in the Arcade since the inaugural season. *Becky's New Car, Split in Three, Vanya and Sonia and Masha and Spike, Arsenic and Old Lace, Tally's Folly, Red, The Rainmaker,* and *The Last Romance* are among the over 25 designs of his that have been produced at Florida Rep. Richard received his MFA from the stage design training program at Meadows School of the Arts, Southern Methodist University, and his BFA from Memphis State University.

CHARLENE GROSS* (Costume Designer)** is thrilled to return for her third season at Florida Rep. She is currently also the Resident Costume Designer and the Production Manager for Ohio Light Opera, where she has designed over 40 productions. During the academic year, Charlene is the Resident Costume Designer for the Theatre and Dance Department of The College of Wooster. Her costume designs for theatre, dance, and opera have been seen on and off Broadway in New York City, across the country, and on the West End London stage. Theatre credits include the Cleveland Playhouse, The Sands Casino (Atlantic City), Seattle Repertory Theatre, The Royal Theatre, The Public Theater (NYC), The Ingenuity Festival, Cleveland Museum of Art and The Manhattan Theatre Club. Designs for dance include GroundWorks, Joyce SoHo, The Yard, The Juilliard School, Dance Space, and Kunningham Studios. Charlene is a member of USA Local 829.

JOHN KISELICA (Sound Designer) is a graduate of West Virginia University with a Bachelor of Fine Arts degree in lighting and sound design. He is the Resident Sound and Lighting Designer for Endstation Theatre Company in Central VA and acts as the Lighting and Sound Supervisor for year round consultation and project specific work. He has worked on a national tour, *Buddy: the Buddy Holly Musical*, as the master electrician after a contract with Royal Caribbean International as a stage technician. Commercial theatrical work includes installing Prodigy Hoists, an automated rigging system from Electronic Theatre Controls. In addition to his seasonal position with Florida Rep, John continues to freelance in the professional, academic, and community theatre circles.

CREATIVE TEAM

MIRANDA PAINE (Asst. Stage Manager Intern)

is so excited to start her internship with the amazing cast and crew of *Outside Mullingar!* Miranda is a recent graduate of Florida State University with a BA in Theatre. Her favorite stage management credits include: *Cabaret*, *How I Became a Pirate*, *Grand Hotel*, *Spamalot*, and *Curtains*.

JASON PARRISH* (u/s Anthony Reilly) is a proud member of Actors' Equity now in his 13th season as an ensemble member with Florida Rep. His over thirty appearances with Florida Rep include *Over the River and Through the Woods*, *The Santaland Diaries* (2009-2014), *Miracle on South Division Street*, *Around the World in 80 Days*, *The Hound of the Baskervilles*, *Noises Off*, *The Big Bang*, *A Funny Thing Happened on the Way to the Forum*, *Twelve Angry Men*, and the nationally-acclaimed productions of *The House of Blue Leaves* and *Arsenic and Old Lace*.

ROB SILER (Lighting Designer) NYC: *Hatched* (Abrons Arts Center). REGIONAL (select credits): *Orfeo ed Euridice*, *Orphée aux enfers* (Maryland Opera Studio); *Bonnie & Clyde*, *5 Lesbians Eating a Quiche*, *Urinetown* (Monumental Theatre Company); *Floyd Collins*, *The Full Monty*, *Into The Woods* (Weathervane Repertory Theatre); *The Wild Party* (Clarice Smith Performing Arts

Center); *Les Misérables*, *Red* (Riverside Theatre); Riverside Children's Theatre; Ocean State Theatre Company; Adventure Theatre MTC. ASSISTANT: *A Delicate Balance*, *The Front Page* (Broadway); *Three Sisters* (Studio Theatre DC); *In the Heights*, *Carousel* (Olney Theatre Center). UPCOMING: *Occupied Territories* (59E59 Theatres); *Erminia*, *The Enchanted Forest* (Kennedy Center). BFA from Shenandoah University, MFA from University of Maryland. He is excited to be making his Florida Rep debut. Thanks and love to Colleen for her love and support. www.silerlights.com

JANINE WOCHNA* (Production Stage Manager)

is an ensemble member having previously stage managed *To Kill a Mockingbird*, *The House of Blue Leaves*, *Over the River and Through the Woods*, *The Cocktail Hour*, *The Unexpected Guest*, *Tribes*, *Around the World in 80 Days*, *Collected Stories*, *Time Stands Still*, *Talley's Folly*, and many others over 12 seasons. Regional theatre credits include: *Brother Wolf*, *Underneath the Lintel*, and *Abundance* at Triad Stage, four seasons as Resident Stage Manager at the Geva Theatre, and 14 seasons at the Cleveland Play House. She is a graduate of the University of Cincinnati College-Conservatory of Music and a proud member of Actors' Equity Association.



ACTORS' EQUITY ASSOCIATION (AEA) was founded in 1913 as the first of the American Actor unions. Equity's mission is to advance, promote and foster the art of theatre as an essential component of our society. Today, Equity represents more than 40,000 actors, singers, dancers and stage managers working in hundreds of theatres across the United States. Equity members are dedicated to working in the theatre as a profession, upholding the highest artistic standards. Equity negotiates wages and working conditions and provides a wide range of benefits including health and pension plans for its members. Through its agreement with Equity, this theatre has committed to the fair treatment of the actors and stage managers employed in this production. AEA

is a member of the AFL-CIO and is affiliated with FIA, an international organization of performing arts unions. For more information, visit www.actorsequity.org.



FLORIDA PROFESSIONAL THEATRES ASSOCIATION (FPTA) is a statewide organization of professional theatre companies and theatre professionals interested in the development and promotion of professional theatre throughout Florida. Florida Repertory Theatre is a proud FPTA member theatre.



Florida Repertory Theatre is a member of **THEATRE COMMUNICATIONS GROUP (TCG)**, the national organization for the American Theatre.

DRAMATURGICAL NOTES

I Never Wanted to Write About the Irish



So begins playwright John Patrick Shanley's reflections on *Outside Mullingar* and the blood running in him.

Shanley grew up in Ireland. Both sides of his family are Irish. His father was born in a farm where he became a shepherd there with his uncles. Irish

music surrounded his childhood. But "Irish" was something Shanley stayed away from for around 40 years of his life.

He became a poet, playwright, and screenwriter but not once did he write about Ireland nor anything about its people. He liked Italian-Americans. He found "something free" in the way they spoke.

In 1993, Shanley finally came home. His aging father wanted to go to the farm he grew up in and "when an old man asks you to take him home, you have to do it." And it was during this trip that he found himself, the part of him that was screaming to be told.

"The farm had become a place in my imagination where I had stored up so many things. My love for my father was there. Feelings of grief. My romantic hunger, my frustration with this unpoetic world. I had held back much for a long time, and I kind of erupted with language. I felt free suddenly, free to be Irish. Family stories, family names, changed by dreaming, mixed with my own long longings for love, and impossible happiness unfurled across the page. I had turned 60, and the knife at my throat woke me to the beauty of my own people, the fleeting opportunities of life, the farce of caution. I wanted to write a love story. I wanted to find all the words I had not been able to find because what I have been unable to express has caused me anguish, even as what I have given adequate voice has lent me peace."

For Shanley, *Mullingar* is intensely personal. Not only is it set against the backdrop of his homeland but the characters it contains are people based on his own family, and the story is his longing and dream.

"The lights will rise on a farmhouse kitchen in rural Ireland. If things go well, my longtime traveling companions, the audience, will share with me something of my Uncle Tony, my Aunt Mary and my cousin Anthony. I'm glad."

(SOURCE: John Patrick Shanley, "Turns Out His Blood Runs Green," *The New York Times*, 2014)

The Heart of the Lakelands

Mullingar is located in the county of Westmeath, Ireland, just east of the Hill of Uisneach, the ancient seat of kings of the kingdom of Meath. The geographic center of Ireland, its fields and hills have borne witness to acts of noble men and unspeakable deeds of deceit and treachery.

A drive 15 minutes outside of Mullingar and east through this historic Irish landscape would reveal Killucan and Rathwire, interconnected villages where our love story truly takes place.



In the 6th century, it is believed that an abbot called Lucan settled on a piece of land and founded a church there, hence providing the name for the village of Killucan. Church of Lucan in Irish is Cill Lucaine. Unfortunately, no traces of this church have survived today. A stone's throw away is the village of Rathwire where remains of the ancient Fort of Guaire stand. It is here that the infamous King John of England fought the Battle of Killucan against the rebellious Irish lords of Meath and Ulster.

Today, Killucan and Rathwire have experienced rapid expansion due to their proximity and excellent transport links to Dublin. (SOURCE: Mullingar.ie)

A Real-Life Romance

Longtime ensemble members, Rachel Burttram and Brendan Powers worked together for the first time in Florida Rep's 2008 production of John Patrick Shanley's *Doubt*, where their onstage chemistry couldn't help but spill offstage. The couple married in 2013 and now reunites to bring another acclaimed Shanley play to life.

