

FLORIDA REPERTORY THEATRE

2016-2017 SEASON

ARTSTAGE STUDIO THEATRE • FORT MYERS RIVER DISTRICT

ROBERT CACIOPPO, PRODUCING ARTISTIC DIRECTOR

PRESENTS



National New Play Network
Rolling World Premiere



DOUBLEWIDE

BY STEPHEN SPOTSWOOD

SPONSORED BY BRUCE & JANET BUNCH

STARRING

ensemble members

RACHEL BURTRAM* • CARRIE LUND*

and

ISABELLA CINTRON • DILLION EVERETT • GREGG WEINER*

DIRECTED BY MAUREEN HEFFERNAN**

SET DESIGNER
RAY RECHT***

COSTUME DESIGNER
ALEXANDRIA VAZQUEZ

LIGHTING DESIGNER
JIM HUNTER***

SOUND DESIGNER
JOHN KISELICA

PRODUCTION STAGE MANAGER
JANINE WOCHNA*

ASST. STAGE MANAGER
AARON MARTIN

ASST. COSTUME DESIGNER
PINGWEI LI

ASST. SOUND DESIGNER
RHIAN FRANCHEBOIS

Doublewide is produced at Florida Repertory Theatre as a part of a National New Play Network Rolling World Premiere.

Other partnering theaters are Florida Studio Theatre (Sarasota); Vermont Stage (Burlington); and Williamston Theatre (MI).

For more information please visit www.nnpn.org

2016-17 GRAND SEASON SPONSORS



RAYMOND JAMES®

The Fred & Jean Allegretti Foundation • Naomi Bloom & Ron Wallace • Dinah Bloomhall • Alexandra Bremner Bruce & Janet Bunch • Gholi & Georgia Darehshori • Mary & Hugh Denison • Ellie Fox • David Fritz/Cruise Everything Dr. & Mrs. Mark & Lynne Gorovoy • John Madden • Sue & Jack Rogers • Arthur Zupko

This entire season sponsored in part by the State of Florida, Department of State, Division of Cultural Affairs, and the Florida Council on Arts and Culture. Florida Repertory Theatre is a fully professional non-profit LOA/LORT Theatre company on contract with the Actors' Equity Association that proudly employs members of the national theatrical labor unions. *Member of Actors' Equity Association. **Member of the Stage Directors and Choreographers Society. ***Member of United Scenic Artists.

CAST

(in order of appearance)

Big Jim.....**GREGG WEINER***
 Sharon.....**RACHEL BURTRAM*†**
 Coral.....**CARRIE LUND*†**
 Lorelai.....**ISABELLA CINTRON**
 Chuck.....**DILLION EVERETT**

TIME & PLACE

Act I: November. A doublewide trailer deep in the middle of dead flat farm country.
Act II: February.

DOUBLEWIDE will be performed with one 15-minute intermission.

The video and/or audio recording of this performance by any means whatsoever is strictly prohibited.

Wardrobe Supervisor: **Alisha Lawrence**

Lighting/Sound Board Operator: **Chris Patterson • Justin Beets**

Asst. Technical Director: **Savannah Relos**

Understudies: **Jimmy Capek • Alexis Slocum**

ABOUT THE PLAYWRIGHT



STEPHEN SPOTSWOOD is a DC-based playwright, educator, and journalist, who received his MFA in Playwriting from Catholic University in 2009. Other produced works include *Girl in the Red Corner* (The Welders); *The Last Burlesque* (Pinky Swear Productions); *Walking The City Of Silence And Stone* (Forum Theatre); *In The*

Forest, She Grew Fangs (defunkt Theatre, Washington Rogues); *We Tiresias* (Best Drama, Capital Fringe Festival 2012); *When the Stars Go Out* (Bright Alchemy Theatre); *Sisters of Ellery Hollow*; *The Resurrectionist King* (Active Cultures Theatre); *Off A Broken Road* (Imagination Stage); and *A Cre@tion Story for Naomi* (Bright Alchemy). He is part of Forum Theatre's artist ensemble and a member of the current generation of The Welders playwrights' collective. You can find him on Twitter and Instagram: @playwrightsteve.

†Member of Florida Repertory Theatre's *Ensemble of Theatre Artists*. See page 23 for the entire ensemble.



 The Designers at this Theatre
 are Represented by
 United Scenic Artists • Local USA 829
 of the International Alliance of Theatrical Stage Employees



*
 The Actors & Stage Manager
 employed in this production
 are members of Actors' Equity
 Association, the Union of
 Professional Actors and Stage
 Managers in the United States.



**
 The Director is a member of the
 STAGE DIRECTORS AND CHOREOGRAPHERS
 SOCIETY, a national theatrical labor union.

DOUBLEWIDE

CREATIVE TEAM



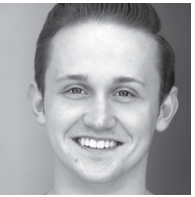
RACHEL BURTRAM* (Sharon) has been a company member since 2002, and has performed in over 20 plays with Florida Rep. Additionally, she has played the roles of Company Manager, Front of House Manager, Director

of Audience Development, and Associate Director here at Florida Rep. Favorite roles at Florida Rep include: *Best of Enemies*, *Split in Three*, *Clybourne Park*, *Miracle on South Division Street*, *August: Osage County*, *Trying*, *Doubt*, *Amy's View* (with Carol Lawrence). Other Regional Theatre credits: Geva Theatre Center, Actors Theatre of Louisville and the Humana New Play Festival, Riverside Theatre, The Kitchen Theatre, Hippodrome Theatre, City Equity Theatre, Barnstormers Theatre, Gloucester Stage. NYC credits include: Actors Studio, Vital Theatre Company, NYC International Fringe Festival. TV & Film: *Bloodline*, *Emma's Fine*, *Burn Notice*, *World Traveler*. National commercials. Rachel is a proud member of Actors' Equity. She is married to actor Brendan Powers. www.rachelburtram.com



ISABELLA CINTRON (Lorelai) is a Junior at Cypress Lake High school. She's been a Florida Rep student since she was seven years old under Lauren Sale and current education director Kody C. Jones.

This is her first Florida Rep show outside of the education department, and she couldn't be more thrilled for the opportunity. You may have recently seen her do a reading of *In Vivo* by Eric Coble for Florida Rep's PlayLab Festival. She was also recently in *The Addams Family* musical playing Wednesday Addams at her high school. She'd like to thank everyone who believed in her and let her become Lorelai. She will be dedicating her performance to her parents for encouraging her and teaching her everything she knows. This show is for them.



DILLION EVERETT (Chuck) is very excited to be returning to Florida Rep after interning in the 2015-2016 season. Previous credits include *Twelve Angry Men* and *A Christmas Story* at Florida Rep, touring with Florida Rep's education

department performing *A Year with Frog and Toad* and *The Red Badge of Courage* and *The Unexpected*

Guest at OnStage Atlanta. Thank you to my family for the constant support and encouragement. "Don't Dream It, Be it"



CARRIE LUND* (Coral) is Co-founder, an ensemble member, and Associate Producer of Florida Rep, and has acted in over 90 productions in Southwest Florida. In 2012, she was named Best Actress of

the Year and named one of the "Power Women of the Year" by *Florida Weekly*. She produced and acted on Sanibel Island from 1984-1998 at the Pirate Playhouse and on Captiva Island with Carrie Lund Presents. She taught theatre at Florida Gulf Coast University in its early years, produced theatre companies in her hometown of Erie, PA and New York City, and performed in regional theatres in NY, VT and NC, as well as the Three River Shakespeare Festival, Pittsburgh Playhouse, and American Ibsen Theatre in Pittsburgh, PA. In 1987, the Sanibel-Captiva Chamber of Commerce awarded her the Distinguished Citizen Award and the Lifetime Achievement Award in 1997. Carrie has been in all nine Florida Rep shows reviewed by *The Wall Street Journal*: *The House of Blue Leaves*, *The Cocktail Hour*, *One Slight Hitch*, *Arsenic and Old Lace*, *The Little Foxes*, *God of Carnage*, *Sylvia*, *You Can't Take It with You*, and *Dancing at Lughnasa*. Other selected credits include Florida Rep's *Erma Bombeck: At Wit's End*, *Becky's New Car*, *Dividing the Estate*, *Tribes*, *Heart Song*, *Clybourne Park*, *Rumors* (2002, 2011), *August: Osage County*, *Noises Off* (1998, 2010), *The Last Romance*, *Enchanted April*, *Rabbit Hole*, *To Kill a Mockingbird*, *The Tale of the Allergist's Wife*, *All My Sons*, and *Private Lives*. Married to Robert Cacioppo, she enjoys the accomplishments of their best productions: Matt, graduate of UCF and Julia, graduate of FSU.



GREGG WEINER* (Big Jim) is thrilled to make his official debut here at Florida Repertory Theatre with such a great, new, and necessary play. Regional theatre credits: *Shining City*, *Dumb Show*, *Speed the Plow*, *Red*, *Pitmen Painters*,

That Championship Season, *Pillowman*, and *Our Lady of 121st Street*. TV/FILM: *It's Always Sunny in Philadelphia*, *War Dogs*, *Transporter 2*, *Magic City*, *Burn Notice*. He is a proud member of Actor's Equity Association, the dramawork shop at PBD, and NWSA Alumni. Big thanks to everyone here for the support and hard work. www.greggweiner.net

2017-2018 Season

A *Revival* of a Florida Rep Favorite, Gut-Busting Comedies, A **Pulitzer Prize-Winning Drama, a Brand-New Musical Revue, a World Premiere, and More!**

*All Titles and Dates Subject to Change

OUTSIDE MULLINGAR

by John Patrick Shanley • SEPT 19-OCT 22, 2017

The Season Starts Two Weeks Earlier!

A Delightful and Heart-Warming Romantic Tony-Winning Comedy! From the Pulitzer Prize and Oscar-winning author of *Doubt* and *Moonstruck*! "Mr. Shanley's finest work since *Doubt*!" –*New York Times*

• In the ArtStage Studio Theatre •

SYLVIA

by A.R. Gurney • OCT 24-NOV 15, 2017

BACK BY POPULAR DEMAND! Celebrate Florida Rep's 20th Anniversary with a revival of our Biggest Hit! A howlingly funny comedy from the author of *The Cocktail Hour* and *Black Tie*!

• In the Historic Arcade Theatre •

DISGRACED

by Ayad Akhtar • NOV 7-DEC 10, 2017

A Gripping and Electrifying Pulitzer Prize-Winning Drama! One of the most-produced plays of 2016! If you enjoyed *Best of Enemies*, don't miss this engaging and provocative story that explores religion, race, relationships, and betrayal.

• In the ArtStage Studio Theatre •

THE LAST NIGHT OF BALLYHOO

by Alfred Uhry • NOV 28-DEC 17, 2017

A Tony-Winning BEST PLAY from the Pulitzer Prize-winning author of *Driving Miss Daisy*!

"An achingly beautiful play! Luminous and powerful!" —*Los Angeles Times*

• In the Historic Arcade Theatre •

NIGHT AND DAY: A COLE PORTER REVUE

Conceived & Directed by Robert Cacioppo

Music and Lyrics of Cole Porter • DEC 19, 2017-FEB 25, 2018

Anything Goes in this glamorous and thrilling journey into the music of one of America's most beloved songwriters! From the creative team that brought you *Fascinatin' Gershwin* and *Too Marvelous for Words*!

• In the ArtStage Studio Theatre •

SUBSCRIBE NOW!

PACKAGES ARE AVAILABLE FOR 9, 8, 7, 6, or 5 SHOWS!

2017-2018 Season

SUBSCRIBE NOW to Our 20th ANNIVERSARY SEASON

Renewing subscribers, your renewal letter is in the mail NOW! If you want to renew immediately, pick up a form in the lobby on the way out!

Please Note: Tuesday, Wednesday, & Thursday now with 7pm curtains

HOW THE OTHER HALF LOVES

by Alan Ayckbourn • JAN 9-31, 2018

One secret affair, two disastrous dinner parties, and three couples heading for matrimonial mayhem! Marital discord has never been funnier in this farce from the Tony and Olivier Award-winning author of previous Florida Rep Hits, *Bedroom Farce* and *Relatively Speaking*!

• In the Historic Arcade Theatre •

THE MIRACLE WORKER

by William Gibson • FEB 13-MAR 7, 2018

A timeless American classic and Tony Award-winning BEST PLAY! Witness the captivating true story of how Annie Sullivan rescued a young Helen Keller from her dark and tortured silence.

• In the Historic Arcade Theatre •

{CLASSIC MUSICAL} TO BE ANNOUNCED APRIL 17, 2017

MAR 20-APR 11, 2018

Celebrate our 20th Anniversary with a hit musical from Broadway's Golden Age! We have to keep the title secret for a few weeks, but we promise a riveting story and an award-winning score!

• In the Historic Arcade Theatre •

WORLD PREMIERE: {TBD}

APR 3-MAY 6, 2018

Be the First Audiences in America to see An Amazing New Play!

From the hard-hitting portrait of a family struggling to make ends meet in *Doublewide* to the door-slamming hilarity of *The Dingdong*, Florida Rep's commitment to nurture new works continues in 2018! Join us for the PlayLab Festival (Apr. 27-30) to see six plays in consideration!

• In the ArtStage Studio Theatre •

FLORIDA REP IS
"One of America's TOP Repertory Companies!"
—The Wall Street Journal

CREATIVE TEAM

MAUREEN HEFFERNAN (Director)** is delighted to be returning to Florida Repertory Theatre where, as a member of the Ensemble of Artists, she has directed over 10 productions including *Dancing at Lughnasa*, *Sylvia*, and *Little Foxes* all of which received praise from *The Wall Street Journal*, among other critics. Over the past 30 years, Maureen has directed more than 90 professional theatrical productions nationally. Besides Florida Rep, some of her favorite theaters include New York's John Houseman Theater and Ensemble Studio Theater, Pittsburgh Public Theatre, PlayMakers Repertory Company, and Pennsylvania Stage Company. Maureen also served as Artistic Director for George Street Playhouse in New Jersey, and as Acting Artistic Director at Delaware Theater Company. She has been recognized as a leader in arts education throughout the country and as an innovator in arts programming for special populations. She was the founding Artistic Director of the Unlimited Potential Theater Company of Very Special Arts in New Jersey. Maureen is a member of the faculty of the School of Arts and Communication at The College of New Jersey where she teaches Integrated Visual and Performing Arts. Most recently at the college, Maureen left the directing chair to appear on stage playing Benjamin Franklin in an all female production of the musical *1776*. Maureen is a proud member of both Actors Equity Association and Stage Directors and Choreographers Society. This show is dedicated to Rich and Connie Heffernan who loved and worked for their kids all their lives and got that house.

RHIAN FRANCHEBOIS (Asst. Sound Designer) is a first-time intern at Florida Repertory Theatre. She recently graduated from Flagler College with a Bachelor of Fine Arts in Theatre Arts. This is her first job after college, and she hopes she pleases your ears.

JIM HUNTER* (Lighting Designer)** *Doublewide* is Jim's 18th design at Florida Repertory Theatre since 2000. Other productions include *Best of Enemies*, *A Christmas Story*, *August: Osage County*, *Lend Me A Tenor*, *The Glass Menagerie*, *Amy's View*, and *Noises Off*. Folger Theatre: *Julius Caesar*, *Richard III*. Phoenix Theatre: *Man of La Mancha*, *The Full Monty*, *Applause*, *Tintypes*. Charlotte Repertory Theatre: *Jar the Floor*, *Other People's Money*. Theatre Virginia: *Lost in Yonkers*, *Moon Over Buffalo*, *The Sunshine Boys*. Arizona Broadway Theatre: *The King and I*. Florida Stage: *Goldie*, *Max*, and *Milk*, *Some Kind of Wonderful*. Arkansas Repertory Theatre: *Talley's Folly*, *Foxfire*. Orlando Shakespeare: *West Side Story*, *Spamalot*, *The 39 Steps*. The Lost Colony: *The Lost Colony*. Drury Lane (Chicago): *La Cage Aux Folles*. Tours: Clear Channel: *Veggie Tales Live* (National) and *Wall Street Danceworks*. AriZoni Awards in Scene Design for *Thoroughly Modern*

Millie and Picnic. Jim is a Professor of Theatre Design at the University of South Carolina and serves on the Board of Directors for the National Association of Schools of Theatre and Chairs the NAST Commission on Accreditation. www.jimhunterdesigns.com.

JOHN KISELICA (Sound Designer) is a graduate of West Virginia University with a Bachelor of Fine Arts degree in lighting and sound design. He is the Resident Sound and Lighting Designer for Endstation Theatre Company in Central VA and acts as the Lighting and Sound Supervisor for year round consultation and project specific work. He has worked on a national tour, *Buddy: the Buddy Holly Musical*, as the master electrician after a contract with Royal Caribbean International as a stage technician. Commercial theatrical work includes installing Prodigy Hoists, an automated rigging system from Electronic Theatre Controls. In addition to his seasonal position with Florida Rep, John continues to freelance in the professional, academic, and community theatre circles.

PINGWEI LI (Asst. Costume Designer) is a costume intern at Florida Rep. She is thrilled to join the world premiere of *Doublewide*. She received her MFA in Costume Design from University of Illinois Urbana-Champaign, and her BA from Boston College. Her past design experience includes *Kingdom City* at Illinois Theatre, *Béatrice et Bénédict* with Lyric Theatre @ Illinois, *LaLulá* with Dance at Illinois, *Polaroid Stories* at Illinois Theatre, *The Voyages of Doctor Dolittle* at Magic Circle Theater and *Picasso at Lapin Agile* at Boston College.

AARON MARTIN (Asst. Stage Manager) is a recent graduate of Jacksonville State University. He is very excited to be a stage management intern for Florida Repertory Theatre. Aaron will be working on the following shows for the 2016-2017 season: *Over the River and Through the Woods*, *The Mousetrap*, *Shear Madness*, and *Doublewide*. He would like to thank his family and friends for all their support, because without them he would not be where he is today.

RAY RECHT* (Set Designer)** is delighted to be back at Florida Rep, where as an ensemble member, his designs include *The Cocktail Hour*, *Dancing at Lughnasa*, *Doubt*, and others. Broadway designs include *The Flowering Peach*, *Trick, Slab Boys*, *The Babe*, several national tours, and over 20 Off-Broadway productions, such as *Collected Stories*, *Marc Salem's Mind Games*, *Mrs. Klein* and sets for the Drama Desk Awards Shows. He has designed over 200 shows for many regional theaters, such as Asolo Theatre, Pittsburgh Public Theatre, Florida Stage Co., Center Stage, and George Street Theatre. Recently he designed the American premier of *Sinners*, directed by Brian Cox for the Mirror

CREATIVE TEAM

Theatre Co. He has designed several feature films and was an art director or assistant art director on many others. He has worked extensively in television, including NBC, Fox, PBS, ABC, over 150 commercials, and many commercial parodies for *Saturday Night Live*. Internationally, he designed for the Wien Staatsoper Ballet, the Stratford Festival, Ontario, and the Manitoba Theatre Centre. He is a professor of Theatre at Marymount Manhattan College in New York City and a proud member of United Scenic Artists Local 829, IATSE.

ALEXANDRIA VAZQUEZ (Costume Designer) was born and raised in Orlando, Florida. She received her Bachelor of Arts in Costume Design from Rollins College and a Master of Fine Arts in Costume Design & Technology from West Virginia University. She has designed costumes and worked on productions at both educational institutions and professional theatres including the Ohio Light Opera, Cincinnati Opera, The Lexington Children Theatre, Shakespeare Theatre of New Jersey and Hanger Theatre. Alexandria is thrilled to be joining the Rep as the Costume Shop Manager and Resident Costume Designer for the 2016-2017 season, her third season with the company. She wants to thank her familia for their continuous support and for being her own personal cheerleaders.
www.alexandriavazquezcostumedesign.com

JANINE WOCHNA* (Production Stage Manager) is an ensemble member having previously stage managed *To Kill a Mockingbird*, *The House of Blue Leaves*, *Over the River and Through the Woods*, *The Cocktail Hour*, *The Unexpected Guest*, *Tribes*, *Around the World in 80 Days*, *Collected Stories*, *Time Stands Still*, *Talley's Folly*, and many others over 11 seasons. Regional theatre credits include: *Brother Wolf*, *Underneath the Lintel*, and *Abundance* at Triad Stage, four seasons as Resident Stage Manager at the Geva Theatre, and 14 seasons at the Cleveland Play House. She is a graduate of the University of Cincinnati College-Conservatory of Music and a proud member of Actors' Equity Association.



ACTORS' EQUITY ASSOCIATION (AEA) was founded in 1913 as the first of the American Actor unions. Equity's mission is to advance, promote and foster the art of theatre as an essential component of our society. Today, Equity represents more than 40,000 actors, singers, dancers and stage managers working in hundreds of theatres across the United States. Equity members are dedicated to working in the theatre as a profession, upholding the highest artistic standards. Equity negotiates wages and working conditions and provides a wide range of benefits including health and pension plans for its members. Through its agreement with Equity, this theatre has committed to the fair treatment of the actors and stage managers employed in this production. AEA



THE NATIONAL NEW PLAY

NETWORK is the country's alliance of nonprofit theaters that champions the development, production, and continued life of new plays. Since its founding in 1998, NNPN has supported more than 200 productions nationwide through its innovative National New Play Network Rolling World Premiere program, which provides playwright and production support for new works at its Member theaters. Additional programs - its annual National Conference, National Showcase of New Plays, and MFA Playwrights Workshop; the NNPN Annual and Smith Prize commissions; its residencies for playwrights, producers and directors; and the organization's member accessed Collaboration, Festival, and Travel banks and online information sessions - have helped cement the Network's position as a vital force in the new play landscape. NNPN also strives to pioneer, implement, and disseminate ideas and programs that revolutionize the way theaters collaborate to support new plays and playwrights. Its most recent project, the New Play Exchange, is changing the way playwrights share their work and others discover it by providing immediate access to information on more than 9,500 new plays by living writers. NNPN's 30 Core and more than 75 Associate Members - along with the more than 150 affiliated artists who are its alumni, the thousands of artists and artisans employed annually by its member theaters, and the hundreds of thousands of audience members who see its supported works each year - are creating the new American theater. nnpn.org



is a member of the AFL-CIO and is affiliated with FIA, an international organization of performing arts unions. For more information, visit www.actorsequity.org.



FLORIDA PROFESSIONAL THEATRES

ASSOCIATION (FPTA) is a statewide organization of professional theatre companies and theatre professionals interested in the development and promotion of professional theatre throughout Florida. Florida Repertory Theatre is a proud FPTA member theatre.



Florida Repertory Theatre is a member of **THEATRE COMMUNICATIONS GROUP (TCG)**, the national organization for the American Theatre.



Florida Rep's 4th Annual

PlayLab

Jason Parrish,
PlayLab Artistic Director

APR 27-30

**BUY
TICKETS!**

ALL READINGS IN THE
HISTORIC ARCADE THEATRE

THURSDAY, April 27

LOVE, THE CRACKSMAN
by Mark Brown
8PM

FRIDAY, April 28

THE FLOWER ROOM
by Daryl Lisa Fazio
2PM

SMOKE

by Gloria Bond Clunie
8PM

SATURDAY, April 29

DAMASCUS

by Bennett Fisher
1PM

Special Event!

**KEYNOTE SPEAKER +
PLAYWRIGHTS' PANEL**
5PM

SUNDAY, April 30

World Premiere

A DREAM

A DREAM

WITHIN
THE SPIRIT OF POE

BY CHRISTOPHER T. PARKS

11AM

**WE WILL NOT
BE SILENT**

by David Meyers
2PM

**GEORGE
WASHINGTON'S
TEETH**

by Mark St. Germain
5:30PM

For More Details Visit www.FloridaRep.org

PLAYLAB ALL ACCESS PASS: \$60

(Includes All Six Readings PLUS Two Special Events!)

See Six Readings AND the Keynote Address &
DREAM WITHIN A DREAM: THE SPIRIT OF POE World Premiere Performance

SINGLE READING TICKETS: \$12

Single Ticket to DREAM WITHIN A DREAM : \$10