

# FLORIDA REP

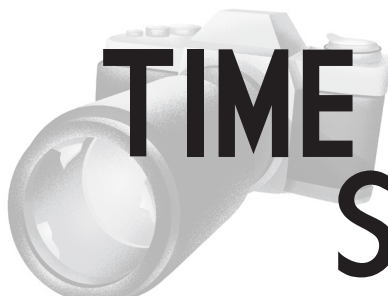


15TH ANNIVERSARY SEASON 2012-2013

HISTORIC ARCADE THEATRE • FORT MYERS RIVER DISTRICT

ROBERT CACIOPPO, PRODUCING ARTISTIC DIRECTOR

PRESENTS



# TIME STANDS STILL

BY DONALD MARGULIES

SPONSORED BY  
**GRAMPY'S CHARITIES**

STARRING  
**CLAIRE K. GUY • TYLER LAYTON\* • GREG LONGENHAGEN\*† • WILLIAM McNULTY\*†**

DIRECTED BY  
**CHRIS CLAVELLI\*\*\***

SET DESIGNER  
**DREW LAMOTT**

LIGHTING DESIGNER  
**KATE SMITH**

COSTUME DESIGNER  
**ROBERTA MALCOLM†**

SOUND DESIGNER  
**TIM COBB**

PRODUCTION STAGE MANAGER  
**JANINE WOCHNA\***

ASST. STAGE MANAGER  
**KASEY PHILLIPS**

TIME STANDS STILL is presented by special arrangement with Dramatists Play Service, Inc., New York

TIME STANDS STILL was produced on Broadway by MTC Productions, Inc. (Lynne Meadow, Artistic Director; Barry Grove, Executive Producer), Nelle Nugent, Bud Martin, Wendy Federman, Ted Snowdon, Max Cooper, Susanne Adamski, Mari Nakachi, Elisabeth Morten/Sharon A. Carr in association with Jack M. Dalgleish and Joseph Sirola.

Originally produced in New York City by the Manhattan Theatre Club, Lynne Meadow, Artistic Director; Barry Grove, Executive Producer; by special arrangement with Nelle Nugent/Wendy Federman.

Originally commissioned and produced by the Geffen Playhouse, Gilbert Cates, Producing Director; Randall Arney, Artistic Director.

## 2012-13 GRAND SEASON SPONSORS



The Fred & Jean Allegretti Foundation • Bruce & Janet Bunch • Cheryl & David Copham  
Gholi & Georgia Darehshori • John & Marjorie Madden • Arthur Zupko

This entire season sponsored in part by the State of Florida, Department of State, Division of Cultural Affairs, and the Florida Council on Arts and Culture. Florida Repertory Theatre is a fully professional non-profit LOA/LORT Theatre company on contract with the Actors' Equity Association that proudly employs members of the national theatrical labor unions. \*Member of Actors' Equity Association. \*\*Member of the Stage Directors and Choreographers Society. †Member of Florida Repertory Theatre's Ensemble of Theatre Artists

# CAST

(In Order of Appearance)

Sarah Goodwin..... TYLER LAYTON\*  
 James Dodd..... GREG LONGENHAGEN\*†  
 Richard Ehrlich..... WILLIAM McNULTY\*†  
 Mandy Bloom..... CLAIRE K. GUY

## TIME & PLACE

A loft in Williamsburg, Brooklyn. The present.

*Time Stands Still* will be performed with one 15-minute intermission.

*The video and/or audio recording of this performance by any means whatsoever is strictly prohibited.*

SCENIC ARTIST **Jessica Cave** • PRODUCTION ASSISTANT **Jake Scott-Hodges** • PROPS ARTISAN **Patricia Snyder**

## ABOUT THE PLAYWRIGHT

**DONALD MARGULIES** received the 2000 Pulitzer Prize for Drama for *Dinner with Friends* (American Theatre Critics' Association New Play Citation, Dramatists Guild/Hull-Warriner Award, Lucille Lortel Award, Outer Critics Circle Award, Drama Desk nominee; a Burns Mantle Best Play). His many plays include *Coney Island Christmas* (Geffen Playhouse/Nov. 2012); *Time Stands Still* (nominated for Tony, Outer Critics Circle, and L.A. Ovation Awards; American Theatre Critics' Association New Play Citation, a Burns Mantle Best Play); *Shipwrecked! An Entertainment – The Amazing Adventures of Louis de Rougement* (As Told by Himself) (Outer Critics Circle Award nomination); *Brooklyn Boy* (American Theatre Critics' Association New Play Award finalist, Outer Critics Circle nominee, a Burns Mantle Best Play); *Sight Unseen* (OBIE Award, Dramatists Guild/Hull-Warriner Award, Drama Desk nominee, Pulitzer Prize finalist, a Burns Mantle Best Play); *Collected Stories* (Los Angeles Drama Critics Circle/Ted Schmitt Awards, L.A. Ovation Award, Drama Desk nominee, Dramatists Guild/Hull-Warriner Award finalist, Pulitzer Prize finalist, Drama Desk nominee; MTC/Friedman [Broadway, 2010]); *God of Vengeance* (based on the Yiddish classic by Sholem Asch); *Two Days; The Model Apartment* (OBIE Award, Drama-Logue Award, Dramatists Guild/Hull-Warriner Award finalist, Drama Desk nominee); *The Loman Family Picnic* (Drama Desk nominee; a Burns Mantle Best Play); *What's Wrong with This Picture?*; *Broken Sleep: Three Plays; July 7, 1994; Found a Peanut; Pitching to the Star; Resting Place; Gifted Children, Zimmer and Luna Park* (Jewish Repertory Theatre). His plays have been performed at major theatres across the United States and around the world. Theatre Communications Group has published seven volumes of his work. *Dinner with Friends* was made into an Emmy Award-nominated film for HBO, and *Collected Stories* was presented on PBS. Currently, he is adapting the novel *Middlesex* by Jeffrey Eugenides into an HBO miniseries. Mr. Margulies has received grants from the National Endowment for the Arts, the New York Foundation for the Arts, and the John Simon Guggenheim Memorial Foundation. He was the recipient of the 2000 Sidney Kingsley Award for Outstanding Achievement in the Theatre by a playwright. In 2005 he was honored by the American Academy of Arts and Letters with an Award in Literature and by the National Foundation for Jewish Culture with its Award in Literary Arts. Mr. Margulies is an alumnus of New Dramatists and serves on the council of the Dramatists Guild of America. Born in Brooklyn, New York, in 1954, Mr. Margulies now lives with his wife, Lynn Street, a physician, and their son, Miles, in New Haven, Connecticut, where he is an adjunct professor of English and Theatre Studies at Yale University.

†Member of Florida Repertory Theatre's *Ensemble of Theatre Artists*.  
 See page 17 for the entire ensemble.

\*\*



\*



\*\*\*



The Designers at this Theatre  
 are Represented by  
 United Scenic Artists • Local USA 829  
 of the International Alliance of Theatrical Stage Employees

\*The Actors & Stage Manager employed in this production are members of Actors' Equity Association, the Union of Professional Actors and Stage Managers in the United States.

# TIME STANDS STILL

## CREATIVE TEAM



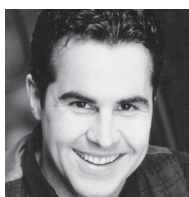
**CLAIRE K. GUY** (*Mandy Bloom*) is back for her fourth season working at Florida Repertory Theatre and her third in Education. A native of Georgia, Claire graduated from Brenau

University in 2007 with a BA in Theatre. She spent two summers as a scenic artist with North Carolina's Flat Rock Playhouse, was production stage manager with North Carolina's *Horn in the West*, but is pleased to call Florida Rep home. Claire has the privilege of directing this year's *I Never Saw Another Butterfly*, as well as past touring shows, *The Imaginators* and *Amelia Earhart*. She also accompanies all of the touring shows as Florida Rep's Tour Manager. Claire was last seen as Sally Applewhite in last season's *It's a Wonderful Life* and in Season 13 as Annie in *King o' the Moon*. She hopes to see you this season at Florida Rep!



**TYLER LAYTON\*** (*Sarah Goodwin*) is thrilled to be performing at Florida Rep for the very first time. She moved to Fort Myers nearly four years ago when she was hired as Acting Professor

at Florida Gulf Coast University. She loves it here. Before that, she was a professional actress for over 20 years including seven seasons at the Oregon Shakespeare Festival. Some of her favorite roles there include Callie in *Stop Kiss*, Cressida in *Troilus and Cressida*, Brooke in *Noises Off*, Joan of Arc in *Henry VI part one*, Cherie in *Bus Stop* and Izzy in *Rabbit Hole*. In her four seasons at the Utah Shakespeare Festival, her favorite roles included Celia in *As You Like It*, Dolly in *You Never Can Tell*, Gwendolyn in *The Importance of Being Earnest* and Mrs. Manningham in *Gaslight*. Other favorite theatres are the Milwaukee Rep where she played Catherine in *The Foreigner*, Colorado Shakespeare Festival where she played Isabella in *Measure for Measure* and Freeport Shakespeare Festival where she played Olivia in *Twelfth Night*. Some of her television credits include recurring roles on *Ellen* and *Charmed* and the series lead on USA Network's *Silk Stalkings*.



**GREG LONGENHAGEN\*\*** (*James Dodd*) is thrilled to be performing at Florida Repertory Theatre where he's appeared in numerous shows over 15 remarkable seasons.

Last seen by Florida Rep audiences as Steve Heidebrecht in *August: Osage County*, his other credits include performances at Charlotte Repertory Theatre, Riverside Theatre, Arrow Rock Lyceum Theatre, Florida Stage, Pirate Playhouse, Pittsburgh Playhouse, Quantum Theatre, Pittsburgh Irish & Classical Theatre, Trilogy Theatre, Pennsylvania Stage Company, Three Rivers Shakespeare Festival, Philadelphia Shakespeare, Opera Delaware, Pittsburgh Musical Theatre, Stage Right, St. Vincent Theatre, the Pantages Theater and Theatre Row Theater. Greg appeared Off-Broadway as Miles in the acclaimed production of *Driving Miles* for Young Playwrights Inc. His film and television credits include *Darrow* with Kevin Spacey, *Milk Money*, *Royal Faceoff* and *As the World Turns*. Greg holds an MFA from the University of Pittsburgh and certified S.A.F.D. at Carnegie Mellon University. He would like to send a very special "thank you" to his family for their love and support ...and especially Liz, Liza Jayne and Jack!



**WILLIAM McNULTY\*\*** (*Richard Ehrlich*) returns to Florida Repertory Theatre after starring as the artist Mark Rothko in Season 14's *Red*. He has been a resident actor/director at

Actors Theatre of Louisville since 1976. In that time he has played over 150 roles. Among them are: Jamie (*Moon for the Misbegotten*), Johnny (*Frankie and Johnny in the Claire de Lune*), Roy Cohn (*Angels in America*), Charlie (*The Foreigner*), Enobarbus (*Antony and Cleopatra*), Norman (*The Norman Conquests*), Scrooge (*A Christmas Carol*) and Nixon (*Nixon's Nixon*). His directing credits include *Educating Rita*, *Full Gallop*, *Seascape*, *The Lover*, *A Slight Ache*, *Dracula*, *Skylight* and *The Beauty Queen of Leenane*. Other theatres with which he has worked are Washington's Arena Stage, the Public Theater in New York City, Alliance, Cleveland Playhouse, St. Louis Rep, Cincinnati

## TIME STANDS STILL

## CREATIVE TEAM

Playhouse, Ensemble Studio Theatre, B Street Theatre, Florida Stage and Moscow Art Theatre. He studied acting at Rollins College and in the MFA program at Penn State. Mr. McNulty is a 2007 recipient of the Fox Foundation Resident Actor Fellowship, one of three grants awarded annually in the Distinguished Artist category.

**CHRIS CLAVELLI\*\*† (Director)** is the Associate Artistic Director of Florida Repertory Theatre and is a faculty member in the Summer Conservatory at the New York Academy of Dramatic Arts. He was honored with an Alan Schneider Directing Award nomination through Theater Communications Group. He was a founding member and co-artistic director of the Neighborhood Theatre for Kids in Brooklyn. Directing credits: At Florida Rep: *Lend Me a Tenor*, *The Mystery of Irma Vep*, *Black Tie*, *Sideman*, *Trying*, *Rounding Third*, *Alone Together*, *The Foreigner*, *The Glass Menagerie*, *The Santaland Diaries* and *The Lady with All the Answers*; the Virginia Stage Company: *Irma Vep*, *Vaudeville* and *Rough Crossing*; Off Square Theatre: *All in the Timing* and *Stones in His Pockets*; Two River Theatre Company: *House of Blue Leaves* and 16 productions for the Depot Theatre, most recently *The Drawer Boy* starring John Christopher Jones. Other theatres: Theatre South Carolina, the New York Fringe Festival, Actors Theatre of Louisville, (Solo Mio), the Southwest Florida Symphony, Symphony Space, York Theatre, 78th Street Theatre, Greenbrier Valley Theatre, Chenango River Theatre, Riverside Theatre, Neighborhood Theatre for Kids and the famed Actors Studio. As an actor he has worked here at Florida Rep in 15 productions and all over the country. In 2012 he was named Florida Weekly's Best Actor of the Year and has been the recipient of both the Barrymore Award (Philadelphia) and the South Florida Carbonell for best actor. His one-man play, *A Little More Than You Wanted to Spend*, recently played Theatre South Carolina and is slated for a New York production. For Jay & Lee.

**TIM COBB (Sound Designer)** is excited to return for his fourth season at Florida Repertory Theatre. His usual job at Florida Rep is Technical Supervisor. Tim is always excited to branch out and work in different aspects of theatre production, having also worked in electrics and, once, in costume construction. He, hopefully, will never be allowed to do that again.

**DREW LAMOTT (Scenic Designer)** is in his second year on staff at Florida Repertory Theatre and his first as the Assistant Technical Director.

He designed this season's Children's Theatre show, *Schoolhouse Rock, Live!* and last season's Conservatory Show, *Pippin*, and has built shows such as *Rumors*, *God of Carnage* and *Bedroom Farce*. After studying technical theatre for five years, Drew graduated with a BFA in Technical Direction, as well as Scenic Design, from Gainesville State College in Gainesville, GA. Prior to arriving at Florida Rep, Drew worked as a carpenter at Flat Rock Playhouse in North Carolina.

**ROBERTA MALCOLM† (Costume Designer)** is pleased to be returning for her ninth season at Florida Rep after 25 years traveling the country as a costumer/designer for everyone from community theatre performers to Florence Henderson, John Ritter, LeVar Burton, Tony Bennett, Patti LaBelle, Margaret O'Brien, Dean Jones and Cloris Leachman. Favorite productions include: *Gaslight*, *Boeing-Boeing*, *You Can't Take It with You*, *My Three Angels*, *Lucky Stiff*, *Florida Follies* starring Florence Henderson, *Too Big to Be a Waitress*, *Show Boat* (Dean Jones and Cloris Leachman national tour), *Little Shop of Horrors*, *Curly McDimple* starring Margaret O'Brien, *Blithe Spirit*, *Annie Get Your Gun*, *A Funny Thing... Forum*, *Death of a Salesman* and *Cinderella – a Rock Fairy Tale*. Thanks to Sean, Becca, Jon, Bob, Fawn – family always; and to Florida Rep and its board for the opportunity to showcase the best theatre around.

**KASEY PHILLIPS (Assistant Stage Manager)** is a proud graduate of THE Florida State University. Graduating Magna Cum Laude, she received a Bachelor of Arts in both Theatre and Creative Writing. Before graduating, she had the privilege of studying abroad at FSU's Theatre Academy London where, among many exciting adventures, she became certified in stage combat with the British Academy of Dramatic Combat and had the opportunity to perform a monologue on the Globe Theatre's stage. As well, she has had the honor of having some of her dramatic writing showcased at Florida State's 2011 New Horizons: Original Works Festival and was cast in a devised adaptation of *Oedipus Rex*. Along with her acting and writing credits, she is happy to be returning to her native Fort Myers and to Florida Rep where she previously worked as a stage manager for their 2011 Summer Theatre Camp. In the management capacity, her credits at FSU include stage managing *The Seagull*, ACTE, the New Horizons: Original Works Festival and the MFA Social Issues Project, as well as assistant stage

## TIME STANDS STILL

## CREATIVE TEAM

managing *Fat Pig* and *The 25th Annual Putnam County Spelling Bee*. This season at Florida Rep, she assistant stage managed *Camping with Henry and Tom* and *The Santaland Diaries*. Whether it be on the stage, backstage, writing for the stage or all three, Kasey is more than excited to see where she lands. She would like to thank her amazing family and friends for their support and for always telling her to do what she loved, even if the odds are not always in your favor. Love you all!

**KATE SMITH (Sound Designer)** is happy to return for her fourth season at Florida Rep. She is a native of Pennsylvania and a graduate from Indiana University of Pennsylvania (IUP). Kate has worked in many aspects of theatre. She most recently served as the Art Director and Lighting Designer for Florida Rep's summer camp program. Sound design credits include *The Little Foxes*, *The Santaland Diaries*, *Camping with Henry and Tom*, *Lend Me a Tenor*, *Talley's Folly*, *Tru*, *Sylvia*, *August: Osage County*, *Trying* and *You Can't Take It with You*. Lighting design credits include *Black Tie*, *It's a Wonderful Life*, *King o' the Moon*, *The Santaland Diaries* and *The Year of Magical Thinking*. Kate has also worked for Brevard Music Center, Flat Rock Playhouse, IUP's Keystone Rep and Footlight Players.

**JANINE WOCHNA\* (Production Stage Manager)** is delighted to return to Florida Rep having previously stage managed *Talley's Folly*, *The Mystery of Irma Vep*, *Red*, *King o' the Moon*, *The Lady with All the Answers*, *The Rainmaker*, *Rounding Third*, *Tuesdays with Morrie*, *Broadway Bound*, *Sherlock Holmes* and *The West End Horror*, *To Kill a Mockingbird*, *The Middle Ages*, *My Three Angels* and *A Dash of Rosemary*. Regional theatre credits include Geva Theatre: *Two Trains Running*, *Almost Maine*, *The Clean House*, *Evie's Waltz*, *ROOMS: a rock romance*, *The Piano Lesson*, *Bad Dates*, *Doubt*, *The Underpants*, *Ella*, *Sweeney Todd*, *A Christmas Story*, *Menopause the Musical*, *The House in Hydesville*, *Pride and Prejudice*, *Cabaret* and *A*

*Christmas Carol*; Cleveland Playhouse: *Tea at Five*, *Leading Ladies*, *Last Night of Ballyhoo*, *A Kiss for Cinderella* and *Two Trains Running*. She is a graduate of the University of Cincinnati College-Conservatory of Music and a proud member of Actors' Equity Association.



**ACTORS' EQUITY ASSOCIATION** (AEA) was founded in 1913 as the first of the American Actor unions. Equity's mission is to advance, promote and foster the art of theatre as an essential component of our society. Today,

Equity represents more than 40,000 actors, singers, dancers and stage managers working in hundreds of theatres across the United States. Equity members are dedicated to working in the theatre as a profession, upholding the highest artistic standards. Equity negotiates wages and working conditions and provides a wide range of benefits including health and pension plans for its members. Through its agreement with Equity, this theatre has committed to the fair treatment of the actors and stage managers employed in this production. AEA is a member of the AFL-CIO and is affiliated with FIA, an international organization of performing arts unions. For more information, visit [www.actorsequity.org](http://www.actorsequity.org).



**FLORIDA PROFESSIONAL THEATRE'S ASSOCIATION (FPTA)**

is a statewide organization of professional theatre companies and theatre professionals interested in the development and promotion of professional theatre throughout Florida. Florida Repertory Theatre is a proud FPTA member theatre.

---

### SPECIAL THANKS

Mamta Mahajan, Kat Schulz and the Orthopedic Specialists of SW Florida

---

## TIME STANDS STILL